

Multi Level Switches Type UNS-1000

Vertical Adjustments -VV

The UNS 1000 Level Switches can be supplied with a vertical Adjustment.

By unscrewing the sleeve (Hex 17) nut, only 1 turn, the whole stem with all floats and contacts can be moved up or down, at any time after installation, within the LX dimension

The maximum pressure for the -VV version is 5 bar regardless if the float would allow a higher pressure.

This -VV option can only be supplied with Flanges (-FL) or Plug (-T).

HT-version:

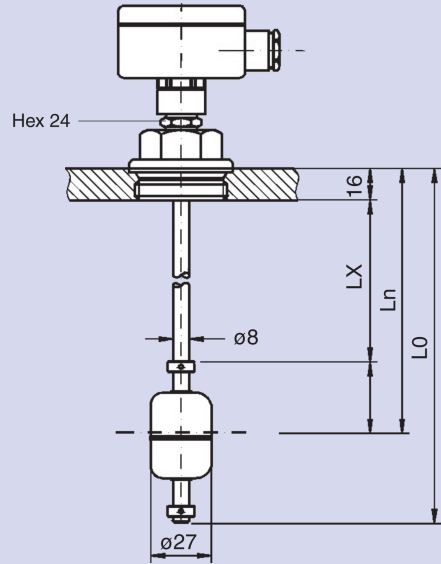
with silicone cable only, KL6 or KL12

PT100:

PT100 = Switchpointt (note max. switchpoints)

Dimension B +10 mm when using PT100

Dimensions (in mm); VV - Vertical adjustment



Slosh Tube -DR

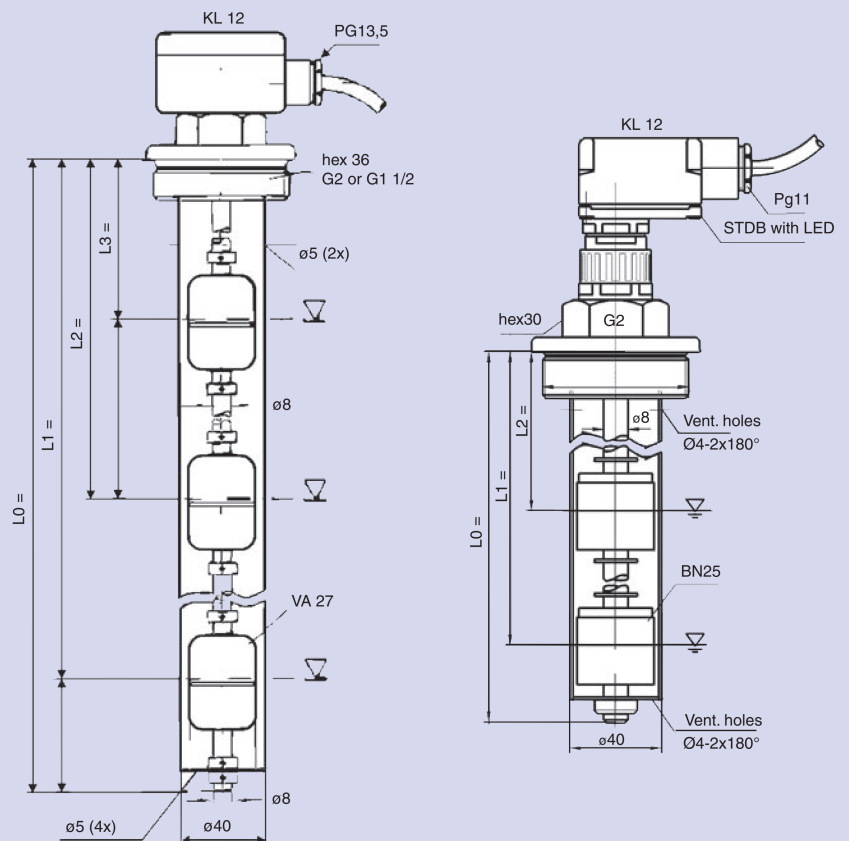
Splash or stilling chamber tubes are useful to:

- protect the floats against other floating objects,
- protect the unit against rough handling,
- dampen oscillating fluid and float movements.

A groove in the mounting plug or flange centres the top of the tube, an end cap or disc with internal hexagon screws holds the bottom of the tube.

Depending on the length of the tube spacer(s) along the stem centres the stem within the tube to ensure unobstructed float movements.

Holes in the top of the tube are sized according to the application to optimize the dampening effect.



12 / 04 UNS US 04/1

Barksdale Level Switches

Specifications are subject to changes without notice.