

# Emergency stop switch

84-5240.0020



Your Expert Partner for Human Machine Interfaces



Your product:



## 84-5240.0020 Emergency stop switch

### FRONT

**Front dimension:** Ø 32 mm

### ELECTRICAL CHARACTERISTICS

**Standards:** According to EN 60947-5-1, EN 60947-5-5, DIN EN ISO 13850, EN IEC 60204

**Thermal current I<sub>th</sub>:** 5 A

**Electric strength:** 500 VAC, 50 Hz, 1 minute according to DIN IEC 60512-2

**Overvoltage category:** II, according to EN / IEC 61058-1

**Protection class:** II, according to EN / IEC 60947-5

**Rated impulse withstand voltage U<sub>imp</sub>:** 2.5 kV, according to EN / IEC 60947-1

**Rated insulation voltage U<sub>i</sub>:** 250 V according to EN / IEC 60947-1

**Rated Operational Voltage U<sub>e</sub>:** 250 VAC / DC according to EN / IEC 60947-1

**Rated short-circuit current caused:** 1 000 A, type of short-circuit device 6 A gG (EN 60947-5-1)

**Electrical lifetime:** 50 000 cycles of operation

**Pollution degree:** 3, according to EN IEC 60947-1

**Switching voltage and switching current:**

Switch rating AC with gold contact					
Service category AC-15					
according to EN IEC 60947-5-1					
Voltage	120 VAC	240 VAC			
Current	3 A	1,5 A			
Switch rating DC with gold contact					
Service category DC-13					
according to EN IEC 60947-5-1					
Voltage	12 VDC	24 VDC	48 VDC	60 VDC	125 VDC
Current plug-in terminal	5 A	4 A	2,1 A	1,7 A	0,55 A
					250 VDC
					0,27 A

### OTHER

**Switching position ring:** Black

**Terminal:** Plug-in terminal, 0,5 x 2.8 mm

**Lens illumination:** non illuminative

**Housing colour:** Yellow

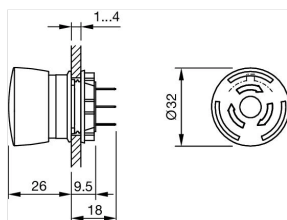
**Housing material:** Plastic

**Weight:** 0.028 kg

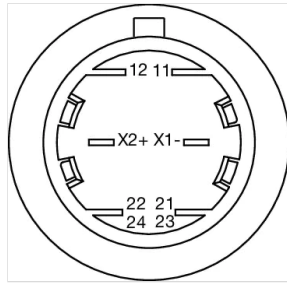
**Contacts:** 2 NC

**Contact material:** Gold

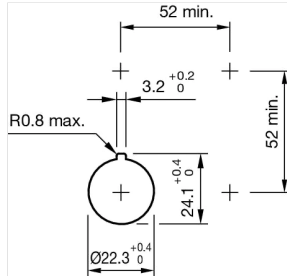
**Dimensions:**



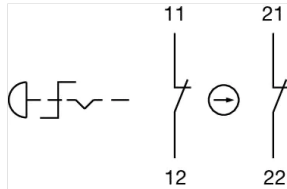
**Component layouts:**



**Mounting cut-outs:**



**Wiring diagrams:**



**MECHANICAL CHARACTERISTIC**

- Operating Travel:** Ca. 4 mm
- Mechanical lifetime:** 250 000 cycles of operation
- Operating force:** 17 N  $\pm$  4 N
- Tightening torque:** Fixing nut 0.8 mm

**AMBIENT CONDITION**

- Climate resistance:** Damp heat, cyclic: 96 hours, + 25 °C / 97 %, + 55 °C / 93 % relative humidity, as per EN IEC 60068-2-30, Damp heat, steady: 56 days, + 40 °C / 93 % relative humidity, as per EN IEC 60068-2-78, Dry heat: 96 hours, + 65 °C, as per EN IEC 60068-2-2, Low temperature: 96 hours, - 25 °C (as per EN IEC 60068-2-1) ) UV test, 56 days (EN 60068-2-5:1999), Saline mist: 96 hours, + 35 °C in chemical solution NaCl, as per EN IEC 60068-2-11
- IP Protection:** IP20 rear side
- Operating temperature:** - 25 °C ... + 70 °C
- Storage temperature:** - 25 °C ... + 85 °C

**CERTIFICATE**

- Approbations:** CCC, UL
- Conformities:** CE, 2006 / 42 / EC (MD), 2011 / 65 / EC (RoHS)