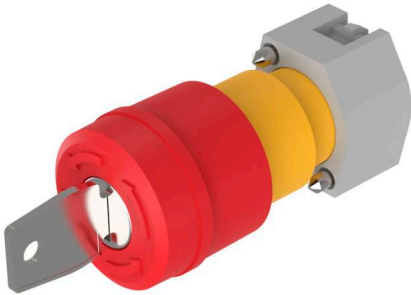


# EAO – Your Expert Partner for Human Machine Interfaces

## 704.066.2 - Stop switch Ø 37 mm - Actuator

### 704.066.2 - Stop switch Ø 37 mm - Actuator



*Attention: The preview is based on a sample product. This can differ from your current configuration.*

#### Attribute

Design	raised
Front dimension	Ø 37 mm
Front form	round
IP front protection	IP65
Mounting cut-out	Ø 22.3 mm
Housing colour	Yellow
Housing material	Plastic
Lens colour	Red
Lens illumination	non illuminative
Lens material	Plastic
Lens optics	opaque
Lens shape	mushroom-head
Marking	Arrows
Switching action	Maintained
Weight	0.3 kg

#### Schaltelement

max. number of switching elements	2
-----------------------------------	---

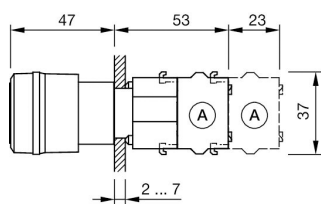
#### Function

Stop switch

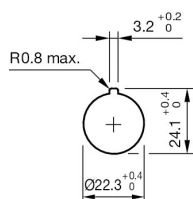
# EAO – Your Expert Partner for Human Machine Interfaces

704.066.2 - Stop switch Ø 37 mm - Actuator

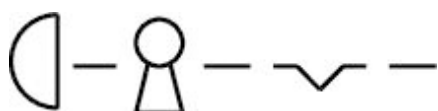
## Dimensions



## Mounting cut-outs



## Wiring diagrams



## Additional information

Max. 2 switching elements can be clipped on

Shaft yellow

Key to unlock clockwise