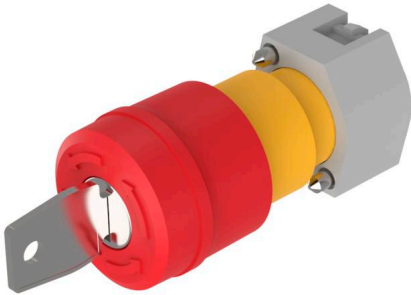


EAO – Your Expert Partner for Human Machine Interfaces

704.066.2A - Emergency stop switch - Actuator

704.066.2A - Emergency stop switch - Actuator



Attention: The preview is based on a sample product. This can differ from your current configuration.

Attribute

Design	raised
Front dimension	Ø 37 mm
Front form	round
IP front protection	IP65
Mounting cut-out	Ø 22.3 mm
Housing colour	Yellow
Housing material	Plastic
Lens colour	Red
Lens illumination	non illuminative
Lens material	Plastic
Lens optics	opaque
Lens shape	mushroom-head
Marking	Arrows
Operating Travel	Approx. 5.8 mm ± 0.2 mm
Switching action	Maintained
Weight	0.3 kg

Schaltelement

max. number of switching elements	2
-----------------------------------	---

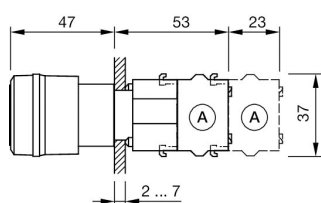
Function

Emergency stop switch

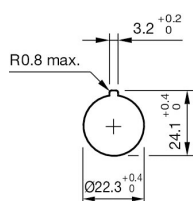
EAO – Your Expert Partner for Human Machine Interfaces

704.066.2A - Emergency stop switch - Actuator

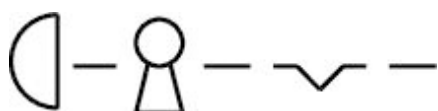
Dimensions



Mounting cut-outs



Wiring diagrams



Additional information

Max. 2 switching elements can be clipped on

Shaft yellow

Shaft yellow

Twist to unlock clockwise