

EAO Series 04 & Series 44 E-Stop Protective Shroud



EAO, the expert for Human Machine Interface Components and Systems, now offers protective shrouds for its 22.5 mm Emergency Stops (E-Stops). These shrouds protect against accidental E-Stop actuation, a feature especially important for semiconductor equipment.

These new protective shrouds are made of non-breakable Lexan plastic for exceptional durability. They feature an anti-rotational pin plus the ability to lock the switch in position with a padlock after actuation. A free actuation angle of 210° can also be specified.

EAO's 22.5 mm Series 04 and Series 44 E-Stop products meet international safety specification ISO 13850 and comply with EN IEC 60947-5-1 and EN IEC 60947-5-5 requirements.

Protective shroud 704.927.9, EAO's 83 mm E-Stop shroud, fulfills the requirements of the semiconductor industry standard SEMI S2-93/12.4c for a diameter no less than 75 mm (3 inches). According to the standard, the EMO should be located in an area not subject to accidental activation. If a button guard is installed, its diameter should be no less than 75 mm (3 inches) with the button recessed no more than 3 mm (0.125 inches) from the front of the guard, or equivalently configured to allow for palm activation.

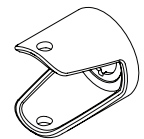
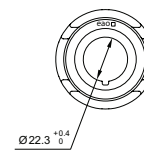
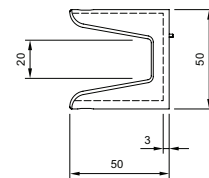
EAO designers are aware of international standards and regulations that impact the design and use of E-Stops. EAO's products are RoHS and REACH compliant, meet UL requirements, Electrosuisse (a Swiss designation), DIN EN, and CE (European Union) approvals. Every device is oil and watertight to a minimum IP 65.

Main Features:

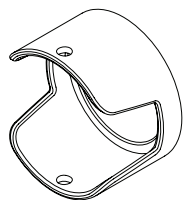
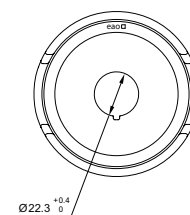
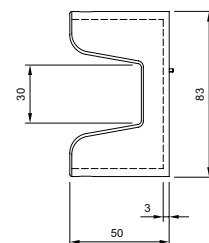
- Unbreakable Lexan construction
- Free actuation angle of 210°
- Anti-rotational pin
- Protection to IP 65 (when used with recommended actuator)
- Padlock security for Lock Out/Tag Out feature
- For use with part number 704.064.2, 704.066.2, 44-712, 44-713, 44-712.001, 44-713.001
- Protective shroud 709.927.9 fulfills requirements of SEMI S2-93/12.4c standard

Dimensions:

704.927.8



704.927.9



EAO E-Stop and Stop Switch Accessories

Protective Shrouds



Part Number	Specs	Notes
704.927.8	Yellow plastic Outer diameter 50 mm; height 50 mm; 20 mm cut-out	For use with part number 704.064.2, 704.066.2, 44-712, 44-713, 44-712.001, 44-713.001.
704.927.9	Yellow plastic Outer diameter 83 mm; height 50 mm; 30 mm cut-out Fulfills requirements for SEMI S2-93/12.4c standard.	For use with part number 704.064.2, 704.066.2, 44-712, 44-713, 44-712.001, 44-713.001.
704.927.4	Yellow painted aluminum Outer diameter 50 mm; height 48 mm; 22.5 mm cut-out	For use with part number 44-711.
61-9965	Yellow painted aluminum Outer diameter 48 mm; height 35 mm; 16 mm cut-out	For use with part number 61-3440.4/8, 61-5441.0/KA.
84-909	Yellow painted aluminum Outer diameter 48 mm; height 35 mm; 22.5 mm cut-out	For use with part number 84-6020.0020, 84-6030.0020, 84-6040.0020, 84-6020.0040, 84-6030.0040, 84-6040.0040.

Protective Shrouds may not be suitable for certain applications, since they may obstruct sudden operation and actuation of the emergency stop switch. Please consult your safety or regulatory agency for suitability within your specific application.

Series 84 Protective Collars



Part Number	Specs	Label
84-902	Yellow plastic; Outer diameter 50 mm, height 11 mm	None
84-902A	Yellow plastic; Outer diameter 50 mm, height 11 mm	NOT AUS
84-902B	Yellow plastic; Outer diameter 50 mm, height 11 mm	EMERGENCY STOP
TBD	Yellow plastic; Outer diameter 50 mm, height 11 mm	EMO
84-902D	Yellow plastic; Outer diameter 50 mm, height 11 mm	NOT HALT

Use with Series 84 Emergency Stop switches.

EAO E-Stop and Stop Switch Accessories

Series 04, Series 44, and Series 84 Legend Plates



Part Number	Specs	Label
704.963.0	Yellow plastic; 90 mm	NOT AUS
704.963.1	Yellow plastic; 90 mm	EMERGENCY STOP
704.963.3	Yellow plastic; 90 mm	NOT HALT
704.963.5	Yellow plastic; 60 mm	NOT AUS
704.963.6	Yellow plastic; 60 mm	EMERGENCY STOP
704.963.7	Yellow plastic; 60 mm	ARRET D'URGENCE
704.963.8	Yellow plastic; 60 mm	NOT HALT
TBD	Yellow plastic; 90 mm	EMO
TBD	Yellow plastic; 60 mm	EMO
44-949	Yellow plastic; 90 mm	None
44-950	Yellow plastic; 60 mm	None

Use with Series 04, Series 44, and Series 84 Emergency Stop switches.

Series 61 Legend Plates



Part Number	Specs	Label
61-9970.0	Yellow plastic; 43 mm	None
61-9970.1	Yellow plastic; 43 mm	NOT AUS
61-9970.2	Yellow plastic; 43 mm	EMERGENCY STOP
61-9970.3	Yellow plastic; 43 mm	ARRET D'URGENCE
61-9970.6	Yellow plastic; 43 mm	NOT HALT
TBD	Yellow plastic; 43 mm	EMO

Use with Series 61 Emergency Stop switches.