

3575 Series air service units – 1½" to 2" Filter Regulators

A 316L stainless steel combined unit for filtration and regulation of compressed air and gases for the actuation industries.

Features and Benefits

- Specifically designed for severe environments
- Self-relieving
- Manual or auto-drain
- 25 micron element stainless steel 316
- 316L stainless steel construction
- Mounting brackets supplied fitted as standard
- Gauge supplied fitted as standard
- Regulated pressure range from 0.50 to 12.0 bar depending on model selection
- Option available to supply without pilot regulator (consult factory for product code)
- Large flow paths (up to 45 Cv)
- NACE capability option available, manual drain only (consult factory)

Units ordered with a specified pressure range will be supplied complete with a pilot regulator and piped using double ferrule fittings.

Media & Ambient Temperature Range

- Standard temperature
-20 to +80 °C (-4 to +176 °F)
- Low temperature version
-50 to +80 °C (-58 to +176 °F)

Ports NPT

(BSP option available - consult factory for part codes)

- 1½", 2"

Gauge Ports

- 1/8" NPT (fitted with gauge)

Relief Vent Port

- 1/2" NPT (fitted with breather)

Maximum Relief Flow

- At 2 bar (29 psi) secondary pressure
0.5 cc/sec (0.03 cu in/sec)



Flow

At 10 bar (145 psi) supply pressure, 6 bar (87 psi) secondary pressure, 1 bar (14.5 psi) pressure drop.

- 2" - 45,000 l/min (1,590 SCFM)

Bowl Capacity

- 21 cc (1.28 cu ins)

Operating Media

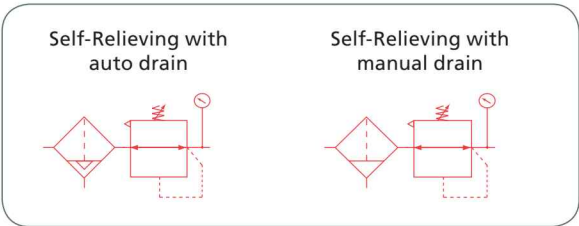
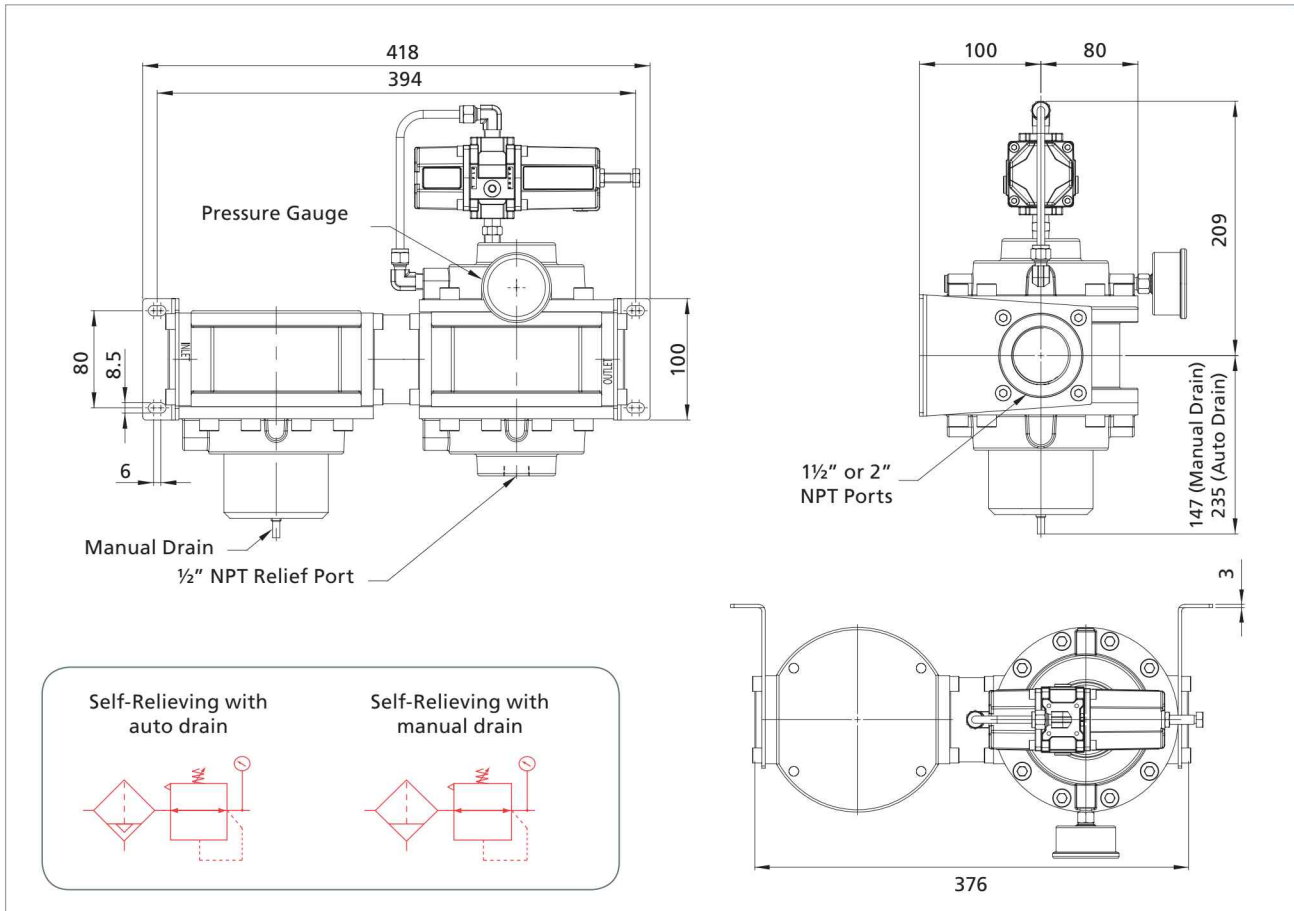
- Air, inert gas and sweet (natural) gas
- Sour gas (NACE) manual drain only

Note: To prevent freezing of the condensate within the product, the media dew point must be at least 10 °C below the lowest ambient temperature the product will be exposed to.

Construction Materials

- Body/bonnet/bowl and internals: 316L stainless steel
Note: on auto-drain version float is nylon, polyoxymethylene and rubber.
- Element: 25 micron 316 stainless steel
- Seals: Nitrile

3575 Series air service units – 1½" to 2" Filter Regulators - Engineering Drawings



Size	Filter	Regulated Pressure bar (psi)	Max Inlet Pressure bar	Weight kg	Cv	
1½"	Manual Drain	0.50 to 2.0 (7.2 to 29)	20	19	38	
2"					45	
1½"	Auto Drain		17		38	
2"					45	
1½"	Manual Drain		0.50 to 4.0 (7.2 to 58)		20	38
2"						45
1½"	Auto Drain	17			38	
2"					45	
1½"	Manual Drain	0.50 to 8.0 (7.2 to 116)			20	38
2"						45
1½"	Auto Drain		17		38	
2"					45	
1½"	Manual Drain		0.50 to 12.0 (7.2 to 174)	20	38	
2"					45	
1½"	Auto Drain	17		38		
2"				45		

3575 Series Coding Chart - Filter Regulators

Size		Type		Material		Seals °C (°F)		Regulated Pressure bar (psi)		Port Style	
7	1 ½"	FRM	Manual Drain	S	Stainless	N	Standard -20 (-4)	02	2 (29)	1	BSP
9	2"	FRA	Auto Drain			L ¹	Low Temp -50 (-58)	04	4 (58)	2	NPT
								08	8 (116)		
								12	12 (174)		

1 – Low temperature version not available in auto-drain