

## 3575 Series air service units – 1½” to 2” Filters

A 316L stainless steel compressed air filter, designed to provide clean air for the actuation industries.

### Features and Benefits

- Specifically designed for severe environments
- Manual or auto-drain
- 25 micron element stainless steel 316
- 316L stainless steel construction
- Mounting brackets supplied fitted as standard
- Large flow paths (up to 45 Cv)
- NACE capability option available, manual drain only (consult factory)

### Media & Ambient Temperature Range

- Standard temperature  
-20 to + 80 °C (-4 to +176 °F)
- Low temperature version  
-50 to +80 °C (-58 to +176 °F)

### Ports NPT

(BSP option available - consult factory for part codes)

- 1½”, 2”

### Flow

At 6 bar (87 psi) supply pressure, 1 bar (14.5 psi) pressure drop.

- 2” - 45,000 l/min (1,590 SCFM)

### Bowl Capacity

- 21 cc (1.28 cu ins)

### Operating Media

- Air, inert gas and sweet (natural) gas
- Sour gas (NACE) manual drain only

Note: To prevent freezing of the condensate within the product, the media dew point must be at least 10 °C below the lowest ambient temperature the product will be exposed to.

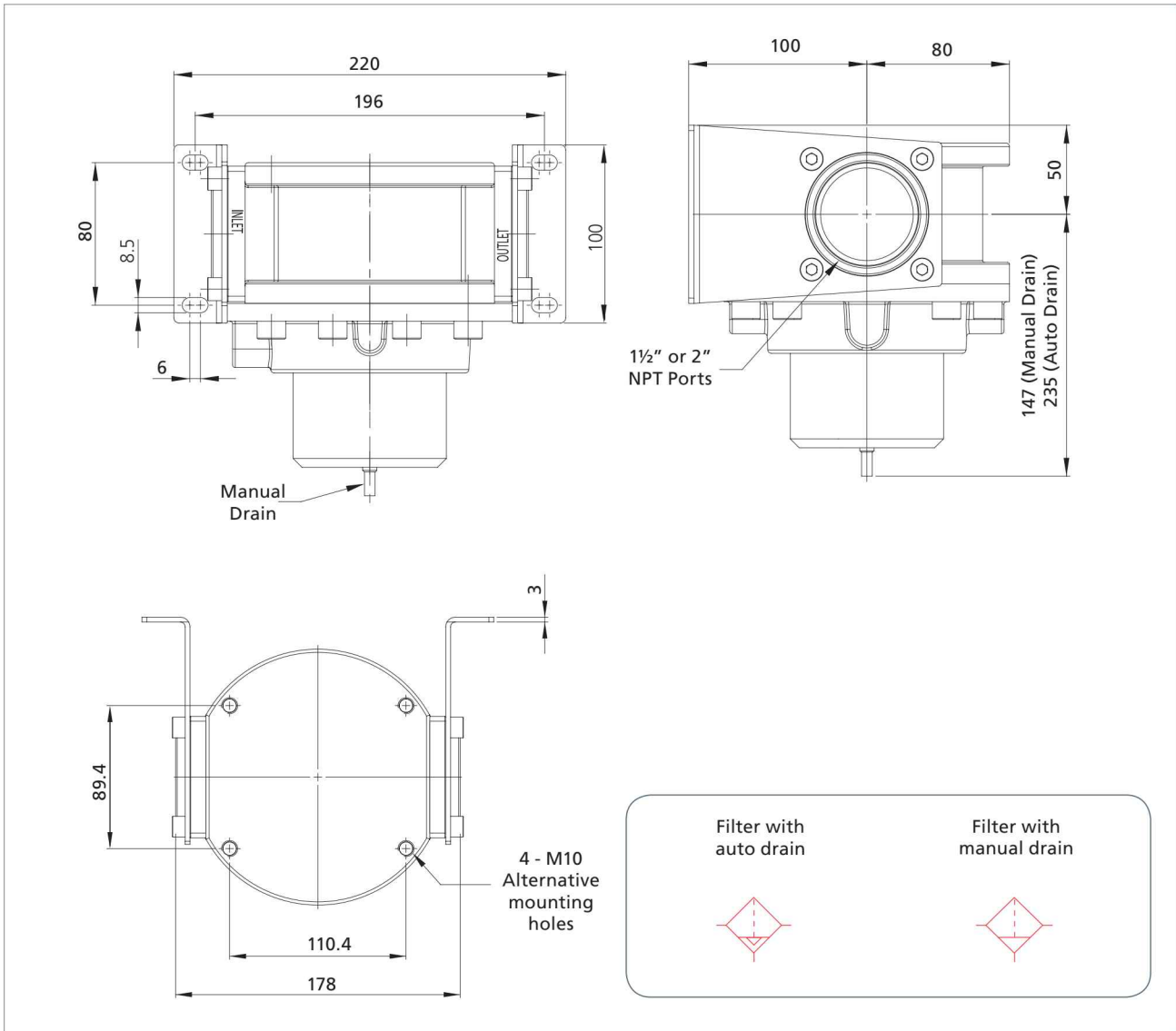


### Construction Materials

- Body/bonnet/bowl and internals: 316L stainless steel  
Note: on auto-drain version float is nylon, polyoxymethylene and rubber.
- Element: 25 micron 316 stainless steel
- Seals: Nitrile

Size	Filter	Max Inlet Pressure bar	Weight kg	Cv
1½”	Manual Drain	20	8.7	38
2”			8.7	45
1½”	Auto Drain	17	8.7	38
2”			8.7	45

# 3575 Series air service units – 1½" to 2" Filters - Engineering Drawings



## 3575 Series Coding Chart - Filters

Size		Type		Material		Seals °C (°F)		Max Inlet Pressure bar (psi)		Port Style	
7	1 ½"	FLM	Manual Drain	S	Stainless	N	Standard -20 (-4)	17	17 (247) (FLA only)	1	BSP
9	2"	FLA	Auto Drain			L <sup>1</sup>	Low Temp -50 (-58)	20	20 (290) (FLM only)	2	NPT

●	●	S	●	●	●
---	---	---	---	---	---

1 – Low temperature version not available in auto-drain