

## 3575 Series air service units – 1½" to 2" Pressure Regulators

A 316L stainless steel unit for pressure regulation of compressed air and gases for the actuation industries.

### Features and Benefits

- Specifically designed for severe environments
- Self-relieving
- 316L stainless steel construction
- Mounting brackets supplied fitted as standard
- Gauge fitted as standard
- Regulated pressure range from 0.50 to 12.0 bar depending on model selection
- Large flow paths (up to 45 Cv)
- Option available to supply without pilot regulator (consult factory for product code)
- NACE capability option available (consult factory)

Units ordered with a specified pressure range will be supplied complete with a pilot regulator piped using double ferrule fittings.

### Media & Ambient Temperature Range

- Standard temperature  
-20 to +80 °C (-4 to +176 °F)
- Low temperature version  
-50 to +80 °C (-58 to +176 °F)

### Ports NPT

(BSP option available - consult factory for part codes)

- 1½", 2"

### Gauge Ports

- 1/8" NPT (fitted with gauge)

### Relief Vent Port

- 1/2" NPT (fitted with breather)

### Maximum Relief Flow

- At 2 bar (29 psi) secondary pressure  
0.5 cc/sec (0.03 cu in/sec)



### Flow

At 10 bar (145 psi) supply pressure, 6 bar (87 psi) secondary pressure, 1 bar (14.5 psi) pressure drop.

- 2" - 45,000 l/min (1,590 SCFM)

### Operating Media

- Air, inert gas and sweet (natural) gas
- Sour gas (NACE) manual drain only

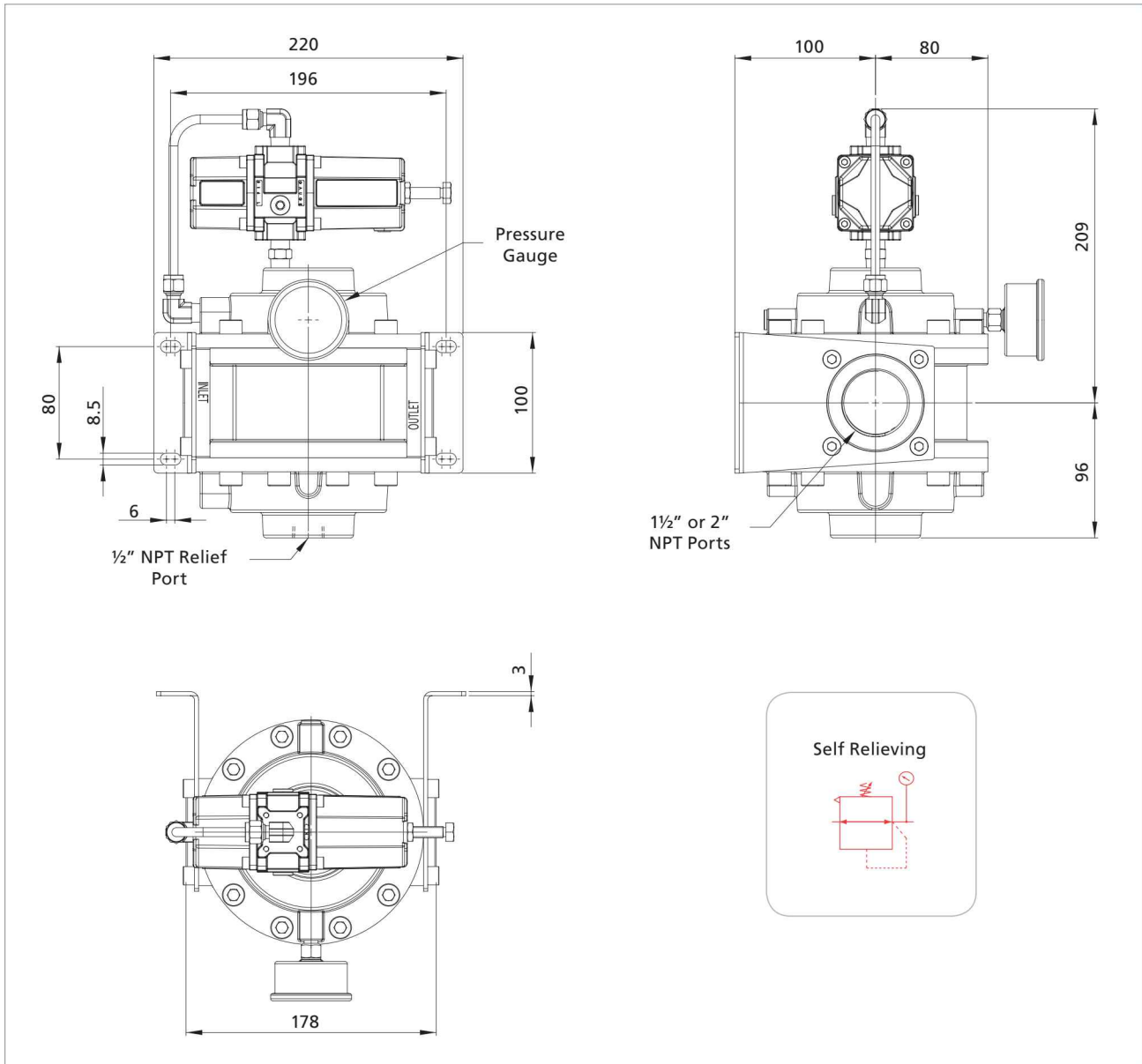
Note: To prevent freezing of the condensate within the product, the media dew point must be at least 10 °C below the lowest ambient temperature the product will be exposed to.

### Construction Materials

- Body/bonnet/bowl and internals: 316L stainless steel  
Note: on auto-drain version float is nylon, polyoxymethylene and rubber.
- Seals: Nitrile

Size	Regulated Pressure	Max Inlet Pressure bar	Weight kg	Cv
1½"	0.50 to 2.0 bar (7.2 to 29 psi)	20	11	38
2"				45
1½"	0.50 to 4.0 bar (7.2 to 58 psi)			38
2"				45
1½"	0.50 to 8.0 bar (7.2 to 116 psi)			38
2"				45
1½"	0.50 to 12.0 bar (7.2 to 174 psi)			38
2"				45

# 3575 Series air service units – 1½" to 2" Pressure Regulators - Engineering Drawings



## 3575 Series Coding Chart - Pressure Regulators

Size		Type		Material		Seals °C (°F)		Regulated Pressure bar (psi)		Port Style	
7	1 ½"	PRV	Self Relieving	S	Stainless	N	Standard -20 (-4)	02	2 (29)	1	BSP
9	2"					L	Low Temp -50 (-58)	04	4 (58)	2	NPT
								08	8 (116)		
								12	12 (174)		
●		PRV		S		●		●		●	