

3500 Series air service units – ¾" to 1" Filters

A 316L stainless steel unit for filtration of compressed air and gases for the actuation industries.

Features and Benefits

- Specifically designed for severe environments
- 40 micron element as standard, 5 micron option available
- 316L stainless steel construction
- Large flow characteristics
- Bowl capacity window

Media & Ambient Temperature Range

- Standard temperature
-20 to + 80 °C (-4 to +176 °F)
- Low temperature version
-50 to +80 °C (-58 to +176 °F)

Note: When product is ordered as /ATEX ambient temperature is limited to +40 °C (104 °F) Ex II 2G c T6.

Flow

At 7 bar (102 psi) supply pressure, 0.35 bar (5 psi) pressure drop.

- 10,020 l/min (353 SCFM)

Maximum Inlet Pressure

- Manual drain - 20 bar (290 psi)
- Automatic drain - 17 bar (247 psi)

Ports NPT

(BSP option available - consult factory for part codes)

- ¾", 1"

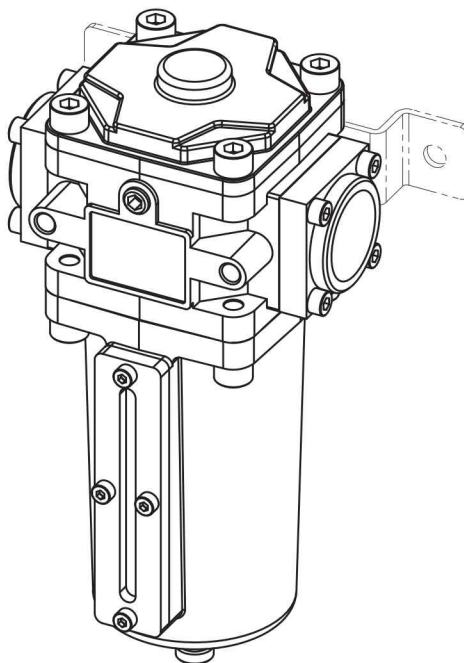
Bowl Capacity

- 260 cc (15.87 cu ins)

Operating Media

- Gases - air, inert gas and sweet (natural) gas

NOTE: To prevent freezing of the condensate within the product, the media dew point must be at least 10 °C below the lowest ambient temperature the product will be exposed to.



Construction Materials

- Body/bonnet/bowl and internals: 316L stainless steel
Note: on auto-drain version float is nylon, polyoxymethylene and rubber.
- Element: 40 micron sintered polypropylene (5 micron option available - suffix product code with '05')
- Seals: Standard option - Fluoroelastomer
Low temperature option - EPDM and Fluorosilicone¹

¹ The use of lubrication upstream of the product is not recommended for low temperature applications.

Accessories Available

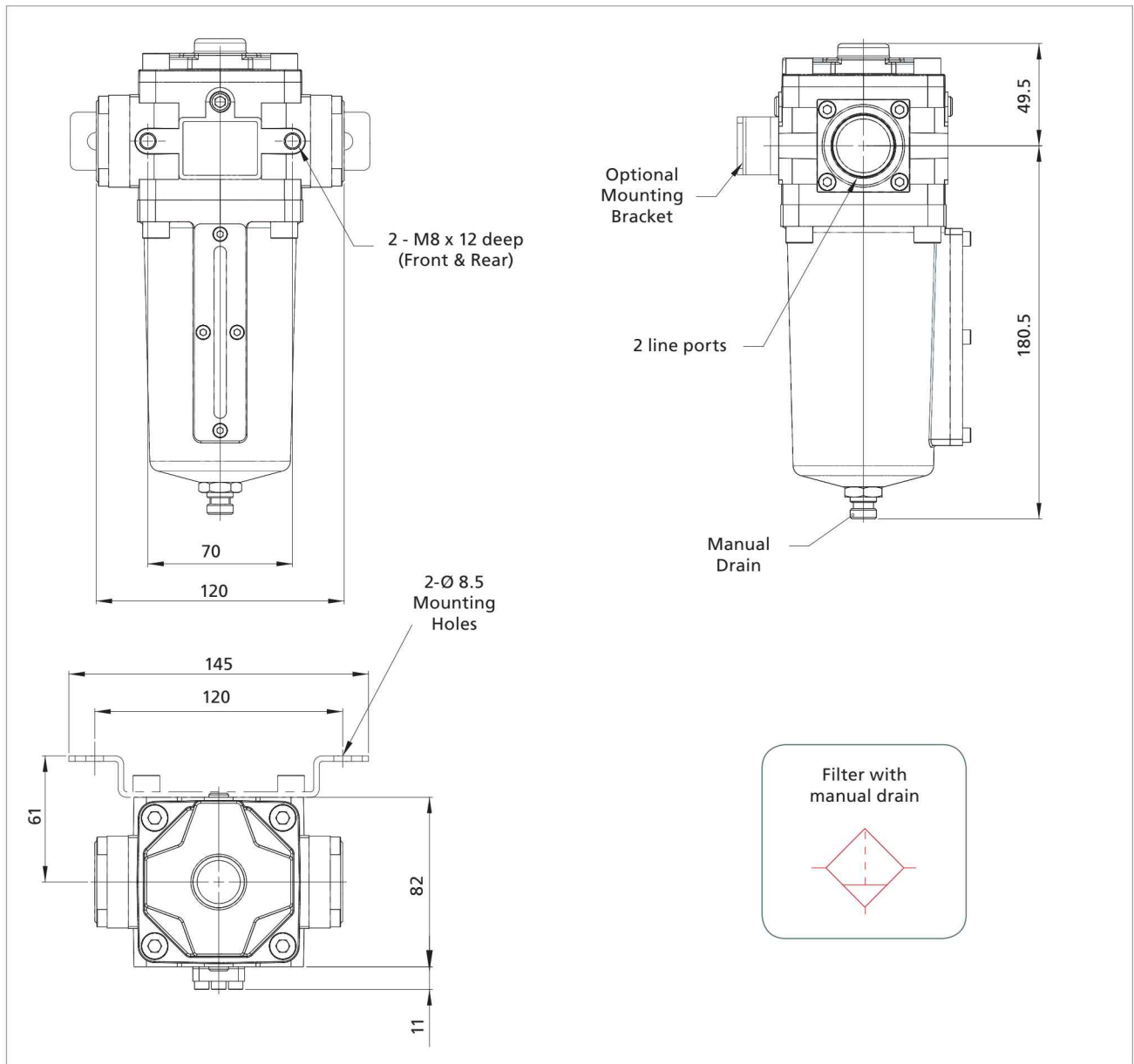
- Mounting brackets

See page 27 for ordering details

Certification Options Available

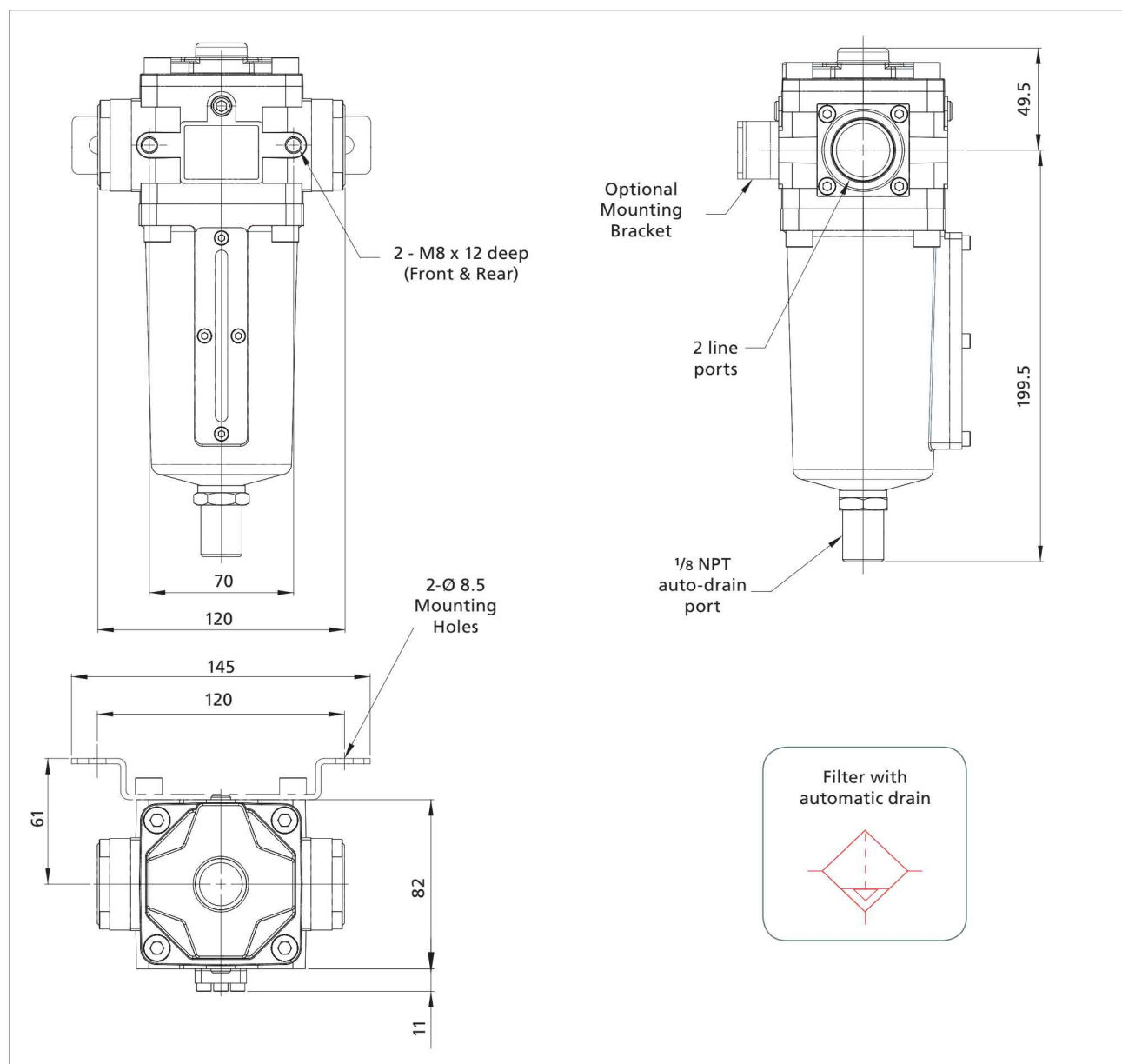


3500 Series air service units – 3/4" to 1" Filters - Engineering Drawings (manual drain)



Size	Filter	Max Inlet Pressure bar	Weight kg	Cv
3/4"	Manual Drain	20	3.75	6.5
1"			3.75	8.8

3500 Series air service units – 3/4" to 1" Filters - Engineering Drawings (auto drain)



Size	Filter	Max Inlet Pressure bar	Weight kg	Cv
3/4"	Auto Drain	17	3.75	6.5
1"			3.75	8.8

3500 Series air service units – 3/4" to 1" Filters - Flow Characteristics

3500 Series Coding Chart - Filters

Additional Options

Size		Type		Material		Seals °C (°F)		Max Inlet Pressure bar (psi)		Port Style		Filter Element (40 micron standard)		Approval	
6	3/4"	FLM	Manual Drain	S	Stainless	V	Standard -20 (-4)	17	17 (247) (FLA only)	1	BSP	05	5 micron	/ATEX	Ex II 2G c T6
8	1"	FLA	Auto Drain			L ¹	Low Temp -50 (-58)	20	20 (290) (FLM only)	2	NPT		w/o option		w/o option

•	•	S	•	•	•	•	•
---	---	---	---	---	---	---	---

¹ Low temperature version not available in auto-drain

