

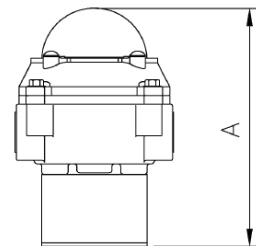
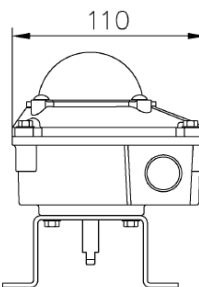
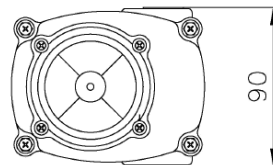
# Limit Switch box, Type ITS100, Mechanical



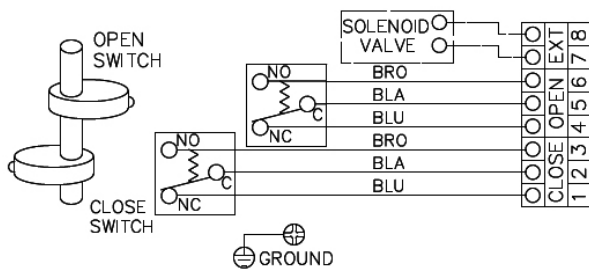
### SPECIFICATIONS

<b>Enclosure</b>	Weatherproof IP67, O-ring sealed
<b>Material</b>	Aluminum, Polyester coated
<b>Ambient temperature</b>	-20°C~+80°C
<b>Switch cams</b>	Adjustable, preset for 90°
<b>Cable entries</b>	2xM20x1.5
<b>Terminal block</b>	8 pos of terminal strips (6 for switches, 2 for solenoid valve power)
<b>Position indicator</b>	Dome type 0°~90°
<b>Mounting bracket</b>	Stainless steel acc. to VDI/VDE3845, NAMUR
<b>Mechanical switches</b>	2 pcs. Max 250V AC 16A, 125 V DC 0.6A

### DIMENSIONS (mm)



### WIRING



A	Type 1	Type 2
136	2-35	-
146	-	35-150
166	250-400	-