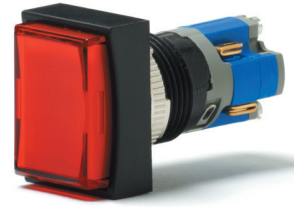


TP5

TP5

| | |
|--------------------|--|
| Panel cut-out (mm) | Ø16.2 or Ø22.5 |
| Characteristics | <ul style="list-style-type: none">■ momentary or latching■ sealed IP40 or IP65■ wide range of bezels■ shallow mounting depth■ with or without illumination■ NO, NC■ gold plated contact blocks |
| Rating | 250 VAC, 5 A |
| Dimensions (mm) | 18 × 24 18 × 18 Ø18 Ø25 |
| Actuator | ■ lenses in different shapes and colors |
| Approvals | UL, CSA, VDE |

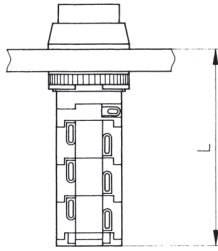


TP5

Specifications

| | |
|--------------------------|--|
| Mechanism | Bi-functional – momentary or latching |
| Actuating force | Approximately 2.5N – 1 contact block |
| Mounting | Central fixing with metal lock nut |
| Protection | IP40, IP65 |
| Bezel material | Thermoplastic or anodized aluminum alloy |
| Lens material | Polycarbonate – engravable |
| Illumination | T13/4 midget grooved lamps – incandescent lamps, LEDs, multi LEDs 60 V, 1.2 W maximum Lamp contact "a" = cathode (-) Appropriate safety regulations should be respected when using the indicator light. |
| Temperature range °C | -20°C to +80°C |
| Mechanical life | 10 ⁶ cycles |
| Contact block (blocks) | Supplied fitted |
| Contact block housing | Self-extinguishing duroplastic (UL 94 V0) |
| Terminal material | Silver alloy with 0.2 µm silver plating plus 0.4 µm gold plating |
| Contact resistance | < 30mOhm |
| Number of contact blocks | 1 NO + 1 NC per contact block, up to a maximum of 3 contact blocks per switch |
| Terminals | Patented flexible solder – suitable for wire diameter 2 × 1.00 mm ² (braided), 4 × 0.75 mm (stranded) |
| Vibration resistance | 1.5 mm pp amplitude at 55 Hz |

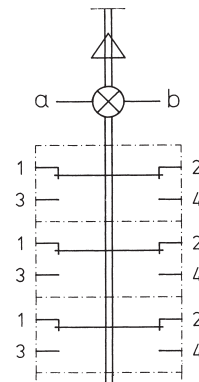
Dimensions



Length in mm (countersunk mounting version)

| Panel cut-out | | 16.2 ±0.1 | 22.5 ±0.1 |
|----------------------|---|-----------|-------------|
| N° of contact blocks | 1 | 27.5 | 26.5 (35.0) |
| | 2 | 36.0 | 35.0 (43.5) |
| | 3 | 44.5 | 43.5 (52.0) |

Circuit diagram (3 contact blocks)



Recommended maximum electrical ratings

| Voltage (max) | Resistive load (A) | Inductive load (A) | Approval |
|---------------|--------------------|--------------------|--|
| 250 VAC | 5.0 (0.7 pf) | | UL, CSA, VDE - max. admissible circuit breaker C6A |
| 12 VDC | 5.0 | 3.0 | General rating |
| 24 VDC | 4.0 | 2.0 | General rating |
| 36 VDC | 3.0 | 1.7 | General rating |
| 48 VDC | 2.0 | 1.5 | General rating |
| 60 VDC | 1.5 | 1.2 | General rating |
| 125 VDC | 0.5 | 0.3 | General rating |
| 250 VDC | 0.3 | 0.2 | General rating |

Electrical life 70,000 cycles at 5A, 250 VAC, 0.7 pf