

FWD Flameproof Air Warmers

The FWD range of air warmers is designed for use in small work or storage areas, and are certified for use in hazardous areas where the atmosphere is classified as a Zone 1 or 2 (IIA, IIB, IIC) gas group, or a Zone 21 or 22 (IIIA, IIIB, IIIC) dust group.

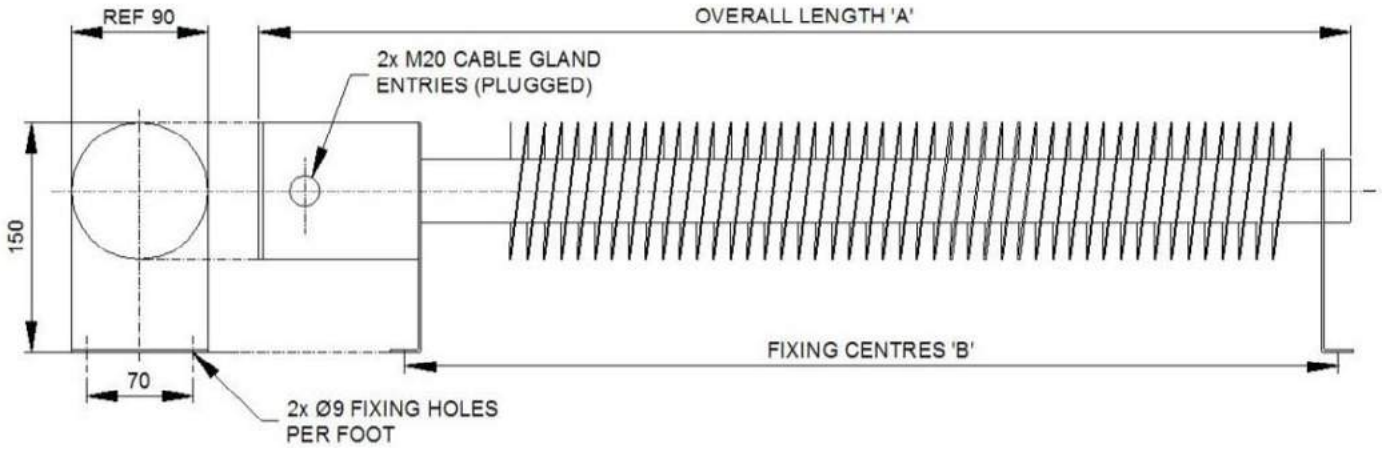


FEATURES

- Certified to ATEX and IECEx standards
- Fabricated carbon steel enclosure weatherproof to IP66
- Temperature classes T2, T3 and T4 available
- Suitable for floor or wall mounting
- 2 × 20mm (plugged) cable entries provided as standard
- Corrosion resistant powder coated finish
- Suitable for ambient temperatures from -60°C to +60°C (subject to conditions to be discussed with sales engineer)
- Individually replaceable heating elements

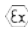
TYPICAL APPLICATIONS

- Aircraft hangar service bays
- Fuel servicing areas
- Chemical plants
- Offshore installations
- Battery stores
- Gas installations
- Containers
- Explosive stores
- Paint / solvent stores
- Dusty environments
- Sugar refineries
- Firework factories
- Ammunition depots



Model	T Class	Watts Rating	Dimensions		Weight (kg)
			A	B	
FWD-500-T3	3	500	800	670	9
FWD-1000-T3	3	1000	1300	1170	12
FWD-1500-T3	3	1500	1900	1770	17
FWD-2000-T3	3	2000	2450	2320	20
FWD-500-T4	4	500	1300	1170	12
FWD-750-T4	4	750	1900	1770	17
FWD-1000-T4	4	1000	2450	2320	20

Certification

ATEX / IECEx  II 2 G/D
 Ex d IIC T2 to T4 Gb suitable for Zones 1 and 2
 Ex t IIIC T300 to T135°C Db suitable for Zones 21 and 22
 CU TR (formerly GOST), KGS (Korea) certified

Rating

500W to 2kW

Enclosure

Mild steel powder coated orange / grey, stainless steel option available to special order

Controls

If required, the heaters can be controlled from the EXHEAT Industrial range of remote mounted thermostats available for use in hazardous areas

Mounting

Pre-drilled support feet supplied as standard; heaters should be mounted horizontally with unrestricted air flow around the unit

Voltage

1 phase: 110 to 120V and 230 to 254V
 3 phase: 380 to 440V, subject to design parameters