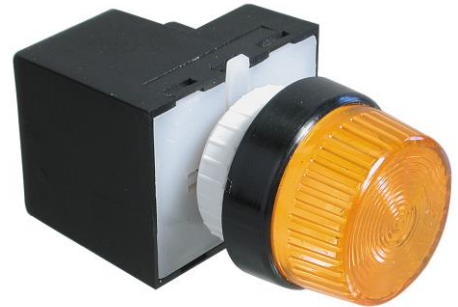


# Panel mount strobe light XP

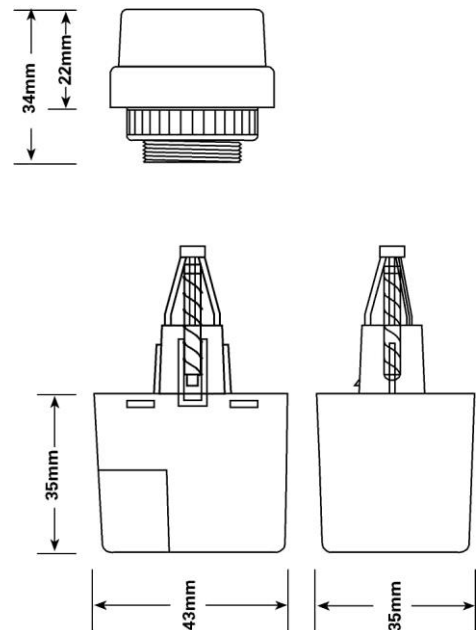
## General information

Compact microstrobe flash in one-piece housing, with push-in rapid connection hence easy to install. For standard 22mm hole pattern. High voltage transient and polarity reversal protection fitted. Fully weatherproof to IP67



## Technical data

Housing	ABS, black
Lens	Polycarbonate
-colours	red, amber, blue green, clear
Protection degree	IP67
Temperature range	-20°C up to +50°C
Operation	100% ED
Mounting	free
Installation	standard hole diameter 22mm
Connection	plug
Flash frequency	75 flashes/Min.
Weight	approx. 0.050 kg



## Order date

Number of article	Nominal tension	Output	Current
XP1.024.3*	10-100VDC/20-72VAC	1W	at 12V 180mA at 24V 150mA at 48V 70mA
XP1.115.1*	99-121VAC	1W	30mA
XP1.230.1*	207-253VAC	1W	15mA

\*lens colours      1 = red , 2 = amber, 4 = green, 5 = blue, 7 = clear

Specifications subject to change without notice

