

# Slow stroke bell WGL

## General information

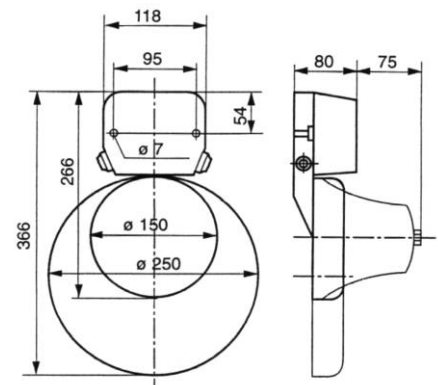
Heavy duty slow stroke bell for harsh environments, e.g. on ships, container-cranes, conveyor belts, on busses or tramways. Also effective, for example, as reliable slow-stroke alarm in materials handling uses.

Highly flexible operation possible: strokes can be adjusted from 30 strokes per minute up to 90 strokes per minute.



## Technical data

Case	Aluminium die casting
Colour	dark grey
Dome	steel, Ø 150mm or 250mm
Colour	light grey
Degree of protection	IP55 according to EN 60529
Duty cycle	continuous operation
Frequency	frequency can be selected between 30 and 90 strokes per minute
Temperature range	-25°C up to +60 °C
Connection	
- cable gland	M20
- cable lead	surface
Installation	dome downwards
Weight	approx. 1.8 kg / 3.3 kg



## Order data

Item number	Nominal tension	Power output	Current	Type
WGL1.115.1	115VAC	105 dB(A), 1m	100mA	dome 150mm
WGL1.230.1	230VAC	105 dB(A), 1m	50mA	dome 150mm
WGL2.024.2	24VDC	105 dB(A), 1m	320mA	dome 150mm
WGL3.115.1	115VAC	110 dB(A), 1m	100mA	dome 250mm
WGL3.230.1	230VAC	110 dB(A), 1m	50mA	dome 250mm
WGL4.024.2	24VDC	ca. 110 dB(A), 1m	320mA	dome 250mm

Subject to change of technical details without prior notice

