

LED-Flash Light BLG10

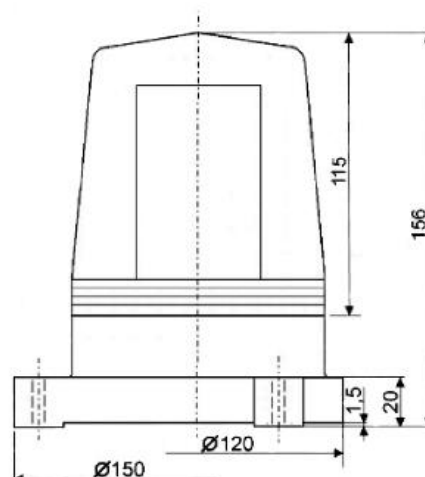
General information

Compact LED flash light with full rubber base, enabling a mounting resistant to vibrations, e.g. on machines, vehicles and on cranes.

The light offers a very wide multi-voltage of 24 – 240 V AC/DC.

Technical data

Housing	flexible TPF
Lens	PC, impact resistant
LED-Couleur	red, amber, green, blue, clear
Protection class	II (no compensation of potential necessary)
Protection degree	IP67 according to EN60529
Cable entry	6-8mm, sealed by rubber base, no strain relief
Connection	for conductors up to 1,5mm ²
Flash frequency	approx. 60 FPM
Mounting position	with cable entrance downwards
Temperature	-20°C up to +50°C
Weight	approx. 0.45 kg
Operation	continuous



Order data

Article number	Nominal tension	Tension	AC	max. current	DC	max. current
BLG10.230.3*	24-240VAC/DC	24V	350mA	450mA	200mA	250mA
		36V	250mA	400mA	150mA	170mA
		48V	150mA	350mA	100mA	120mA
		120V	75mA	250mA	50mA	70mA
		240V	50mA	200mA	35mA	40mA

*Colour 1 = red, 2 = amber, 4 = green, 5 = blue, 7 = clear

Subject to technical changes anytime without prior notice

