

Bulkhead Light Fitting

Series 6788



www.stahl.de



- > Suitable for incandescent lamps up to 100 W and halogen lamps up to 150 W
- > Through-wiring possible

E2



12797E00

The bulkhead light fitting 6788 is ideally suited for a Zone 2 environment and is suitable for a large ambient temperature range.

Zone	ATEX/GOST					
	0	1	2	20	21	22
For use in			x			

WebCode 6788A

Bulkhead Light Fitting

Series 6788

Selection Table

Version	Lamps	Lampholder	Order number	Weight kg
Bulkhead light fitting Series 6788	up to 150 W	E27	6788/1-2-2	4.000
Note The light fittings are supplied without lamps, see accessories.				

Explosion Protection

Version	6788 (Zone 2)
Explosion protection Europe (ATEX) Gas	IBExU 06 ATEX B035 II 3G Ex nA II T*

Certificates and approvals

Certificates	ATEX, Belarus (GOST-B), Kazakhstan (GOST-K) * Temperature class			
Lamps	Lamp wattage	Temperature classes for different orientations		
		Ceiling mounting	Wall mounting	
			horizontal	vertical
Incandescent lamps 230 V	100 W	T2 ¹⁾	T1	T2
	100 W ²⁾	T2 ¹⁾	T2	T2
	100 W coloured glass	T1 ¹⁾	T1	T1
	60 W	T2	T2	T2
	60 W (Ta ≤ 60 °C)	T2 ³⁾	T2 ³⁾	T2 ¹⁾
	40 W	T2	T2	T2
	25 W	T3	T3	T3
Incandescent lamp 24 V	100 W	T1 ¹⁾	T1 ¹⁾	T1 ¹⁾
	60 W	T2	T2	T2
Halogen lamps 230 V	150 W	T1 ³⁾	T1 ³⁾	T1
	100 W	T2	T2	T2

¹⁾ Connection with heat-resistant cable ≥ 85 °C required
²⁾ Lamp with internal reflector
³⁾ Connection with heat-resistant cable ≥ 95 °C required

Technical Data

Electrical data	230 V AC and 24 V AC / DC					
Rated voltage	230 V AC and 24 V AC / DC					
Luminous Characteristics	Incandescent lamps, E27 lampholder, for 25, 40, 60, 100 W Halogen lamps, E27 lampholder, for 100, 150 W					
Lamps	Incandescent lamps, E27 lampholder, for 25, 40, 60, 100 W Halogen lamps, E27 lampholder, for 100, 150 W					
Note	Only incandescent lamps of the companies OSRAM and RADIUM to DIN 49810 part 5 may be used! Shockproof incandescent lamps are exempt from the EU directive on energy saving.					
Luminous flux	Incandescent lamps			Halogen lamps		
	25 W	40 W	60 W	100 W	100 W	150 W
	200 lm	325 lm	575 lm	1160 lm	1800 lm	2870 lm
Luminous intensity distribution						

Bulkhead Light Fitting

Series 6788

Technical Data

Mechanical data

Type of protection	IP64
Protection class	I (with internal and external PE / PA connection)
Material	
Enclosure material	Light cast alloy, grey
Wire guard	Steel wire, galvanized
Glass	Pressed glass, resistant to temperature changes
Cover options	M6, Hexagonal screw; without switch


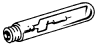
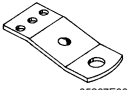
Ambient conditions

Ambient temperature	- 20 ... + 40 °C - 20 ... + 60 °C @ 230V/60W
---------------------	---

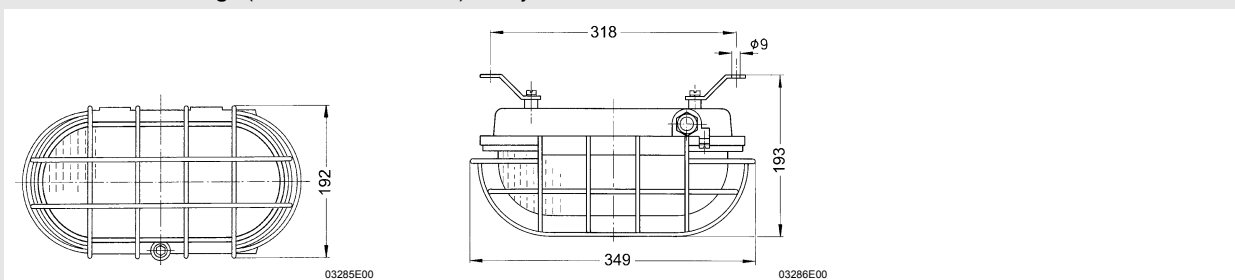
Assembly / Installation

Cable entry	1 x M25 x 1.5 cable gland 1 x M25 x 1.5 stopping plug
Connection type	Terminals L1 + N for 2 x 4 mm ² , flexible/solid PE for 2 x 4 mm ² , flexible/solid

Accessories and Spare Parts

Designation	Illustration	Description	Order number	Weight kg
Incandescent lamp	 04958E00	40 W E27 230 V 325 lm	111712	0.035
		60 W E27 230 V 575 lm	111713	0.035
		100 W E27 230 V 1160 lm	108853	0.033
		60 W E27 24 V ▽	108860	0.042
		100 W E27 24 V 1160 lm	109340	0.020
Halogen lamps	 05355E00	100 W E27 230 V 1800 lm	207459	0.150
		150 W E27 230 V 2870 lm	207458	0.080
Mounting brackets	 05267E00	1 set	121705	0.115

Dimensional Drawings (All Dimensions in mm) - Subject to Alterations



We reserve the right to make alterations to the technical data, dimensions, weights, designs and products available without notice. The illustrations cannot be considered binding.