

Emergency Light Fitting for Fluorescent Lamps

Series ECOLUX 6608 Economy



www.stahl.de



12124E00

- > For fluorescent lamps
2 x 18 W and 2 x 36 W
- > Electronic ballast with integrated
emergency light electronics
- > Battery is integrated in the lamp
enclosure
- > For emergency light mode 1.5 h
- > Intelligent charging technology
- > Enclosures in glass fibre
reinforced polyester resin,
lamp cover in shock-resistant
polycarbonate
- > Enclosure closed by means of
quick-action locks



E2

The battery-operated emergency light fittings of the Series ECOLUX 6608 Economy can be used as emergency lighting according to EN 60598.

Zone	ATEX / IECEx / GOST					
	0	1	2	20	21	22
For use in			x			x

WebCode 6608A

Emergency Light Fitting for Fluorescent Lamps

Series ECOLUX 6608 Economy

Selection Table

Version	Lamps	Lamp activation	Operating time test	Order number	Weight kg
ECOLUX 6608 Economy Zone 2, 22	2 x 18 W	1 channel	with	6608 / 322-8010-5247	3.860
			without	6608 / 322-8010-5248	3.860
	2 x 36 W	1 channel	with	6608 / 342-8010-5247	5.680
			without	6608 / 342-8010-5248	5.680

Order Number Supplement

Through wiring	without (standard)	6608 / 0
	with 6 conductors (only for 36 W)	6608 / 34 . . . 6
Cable entry	Standard: M25 x 1.5 1 Cable gland 2 Stopping plugs	6608 / 1
	Special M20 or M25 of moulded material or metal to be specified with or- der	6608 / 9

Note The lights are delivered without fluorescent lamps and assembly parts. These parts must be ordered separately!

Explosion Protection

Explosion protection Global (IECEX) Gas and dust	IECEX PTB 09.0031X Ex nA II T4 Ex tD A22 IP66 T65°C
Europe (ATEX) Gas and dust	PTB 09 ATEX 2015 X ⊕ II 3 G Ex nA II T4 ⊕ II 3 D Ex tD A22 IP66 T65°C
Certificates and approvals Certificates	IECEX, ATEX, Russia (GOST R)

Technical Data

Electrical data	
Rated voltage	AC: 220 ... 240 V, 50 / 60 Hz
Disconnection of the light	Optionally when opening the lamp cover when opening the locking mechanism on one of the quick-action locks, all poles of the voltage supply to the ballast are disconnected; contacts of the switching element with positive break, they are switched on again as soon as the lamp cover and the quick-action lock are closed. in case of a lamp fault in case of a lamp fault, the electronic ballast disconnects the defective lamp from the power supply.
Luminous Characteristics	
Lamps	2 x 18 W 2 x 36 W
Lamp version	2-lamp 2-lamp
	without auxiliary reflector with auxiliary reflector
Class according to LitG	B21 B31
Measures for light guidance	Standard Broad reflective, internal reflector of light fitting painted white. Colour: Signal white RAL 9003; lateral glare is limited by the lamp diffuser cover. Special Auxiliary reflector (easily mountable), narrow-angle / wide-angle shining, aluminium anodised and polished.

Emergency Light Fitting for Fluorescent Lamps

Series ECOLUX 6608 Economy



Technical Data

Ambient conditions

Standard operation	- 20 ... + 40 °C
Battery operated	functional at temperatures between - 5 ... + 40 °C

Mechanical data

Degree of protection	IP66 (IP64 with breather 8162)
Protection class	I (with internal PE connection)
Material	
Enclosure	Polyester resin, glass fibre reinforced, colour white, similar to RAL 9010
Lamp cover	Polycarbonate, shock-resistant, as an option an aromatic-resistant paint can be used
Seal	Polyurethane foam gasket in the lamp cover
Quick-acting locks	Polyamide, glass fibre reinforced
Assembly parts	Polyester resin, glass fibre reinforced, white, similar to RAL 9010
Cover options	Quick-acting locks to be opened by means of a screwdriver; lamp cover is equipped with a hinge

Assembly / Installation

Cable glands	Connection side: 1 cable gland M25 x 1.5 and 1 stopping plug M25 x 1.5 Opposite side: 1 stopping plug M25 x 1.5 (cable glands enclosed) Entry parts in moulded plastic (8161/8290): M20 Metal glands: M20, M25, Metal cable gland earthing via metal adapter plates
Connection option	Terminals L1, L2, L3, N, PE, L' (switched phase) 2.5 mm ² fine / single wire L1 = charging phase, must not be switched
Through wiring	Lights available with internal through wiring, 6 wires; Cross-section 2.5 mm ² for max. 16 A only possible for 36 W

Battery set

Version	NiCd battery
Operating voltage	6 V
Capacity	4 Ah
Replacing the battery set	Open the light, the battery can be replaced by means of plugs in the enclosure

Emergency light electronics



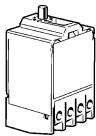
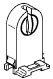
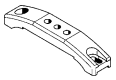
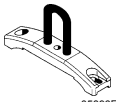

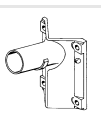
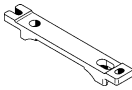

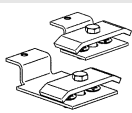
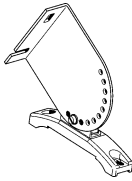
Design	The emergency light electronics is installed in an enclosure together with the electronic ballast
Operating modes	Continuous circuit
Interference suppression	according to DIN EN 55015
Functional test	The functional test lasts one minute and is carried out automatically once a week. Note: The first functional test is carried out 1 hour after putting into operation, that means after having connected the operating voltage to the terminals L1 and N.
Light duration test of the emergency lighting	The continuous function test for the emergency lighting is carried out every six months for a time period of 1 hour. During the test, the battery capacity is checked. Note: The first continuous function test is carried out 24 hours after putting into operation, that means after having connected the operating voltage to the terminals L1 and N.
Function indicators	LED display After putting into operation and after each connection to the power supply voltage, the LED lights up for 10 seconds (function control of the LED). The display indicates for 10 seconds whether the continuous function test is activated (LED flashes) or deactivated (LED off). Afterwards the display switches to the normal display mode and the following states are shown. LED green - Light is OK - Charging current flows LED flashes - Light is OK - Functional test is active LED off - Mains failure - Lamp or battery fault
Battery charge	Intelligent battery management
Emergency light mode	In the emergency light mode, only one lamp is used, see table
Emergency light service time	1.5 h for a battery capacity 4 Ah
Switchover voltage	from mains to battery operation for $U < 0.74 \times U_N$ from battery to mains operation for $U > 0.80 \times U_N$
Lighting power in case of emergency light mode	18 W: 64 % 36 W: 32 %

E2

Emergency Light Fitting for Fluorescent Lamps

Series ECOLUX 6608 Economy

Accessories and Spare Parts

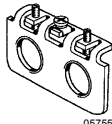
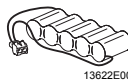



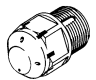
Designation	Illustration	Description	Art. no.	Weight kg
Fluorescent lamp	 04936E00	Two-pin cap \varnothing 26 mm Light colour: universal white		
		18 W 1350 lm	108952	0.100
		36 W 3350 lm	108951	0.200
Lamp cover	 05329E00	for lamp 18 / 20 W	124635	0.500
		for lamp 36 / 40 W	124646	1.300
		for lamp 58 / 65 W	124657	1.000
Switch	 10809E00	Switching element 8080/1-3-L, 2 normally closed contacts	132527	0.025
Lamp holder	 05888E00	Lamp holder for two-pin cap lamps G 13	107275	0.008
Mounting rail	 05895E00	for a variable mounting distance of 1 pair	124894	0.210
Mounting rail with a bracket	 05896E00	Mounting bracket mounted on the mounting rail for a variable mounting distance	of 1 pair 124901	0.300
Ring bolt M 8	 05378E00	M8, direct mounting in insert nuts, 1 pair	115736	0.120
Fixation for stanchion mounting	 05460E00	to mount the lamps as side-entry lamps using a tube with a length of 1300 mm, \varnothing 42 mm (for pipe clamp R 1 1/2")	109281	6.000
Top rail	 05897E00	for ceiling suspension of the lamp, 1 pair	124908	0.230
Pipe clamp	 09402E00	with mounting rail for a variable mounting distance; Material: stainless steel		
		R 1 1/4" (\varnothing 42 mm)	124913	1.140
		R 1 1/2" (\varnothing 48 mm)	124891	1.160
Mounting set for grid racks	 04361E00	R 2" (\varnothing 60 mm)	124898	1.300
		for grid cable racks, with a cable diameter of 6 mm; with mounting rail for a variable mounting distance; Material: stainless steel	124905	1.560
Wall and ceiling mounting bracket	 05898E00	mounted on a mounting rail for a variable mounting distance; Material: stainless steel Lamp can be swiveled in steps of 15°		
		1 pair	124910	1.150

Emergency Light Fitting for Fluorescent Lamps

Series ECOLUX 6608 Economy



Accessories and Spare Parts

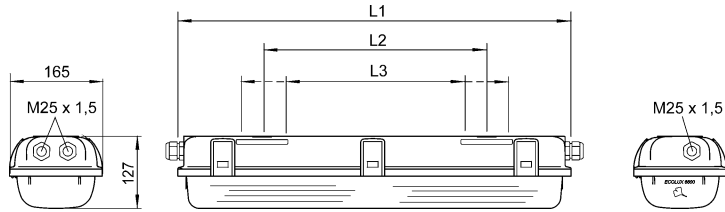
Designation	Illustration	Description	Art. no.	Weight kg	
Adapter plates	 05759E00	for earth continuity when using metal glands;			
		1 x M20 x 1.5	1 piece	115815	0.070
		1 x M25 x 1.5	1 piece	115818	0.070
		1 x NPSM 1/2"	1 piece	115821	0.070
		1 x NPT 3/4"	1 piece	115824	0.070
		2 x M20 x 1.5	1 piece	115826	0.060
		2 x M25 x 1.5	1 piece	115828	0.060
		2 x NPSM 1/2"	1 piece	115829	0.060
Battery set	 13622E00	NiCd battery for 6608/3 4 Ah / 6 V	1 pc	211520	1.100
Reflectors	 05324E00	for later installation, broad deep beam			
		for lights with two lamps 18 W		117098	0.265
Cable gland	 05864E00	for lights with two lamps 36 W		117115	0.234
		of moulded material, series 8161			0.000
		8161/5-M20-13	1 piece	138518	0.012
		8161/5-M20-13	50 pieces	138454	0.600
		8161/5-M25-17	1 piece	138520	0.020
		8161/5-M25-17	50 pieces	138456	1.000
Stopping plugs	 04840E00	of moulded material, series 8290			
		8290/3-M20	1 piece	143522	0.005
		8290/3-M20	100 pieces	143543	0.500
		8290/3-M25	1 pieces	143524	0.007
		8290/3-M25	100 pieces	143544	0.700
Breathing gland	 05703E00	for installation in lights; in moulded material; without counter nut			
		Thread: M25 x 1.5	1 pc	138573	0.010
		Thread: M25 x 1.5	20 pcs	138576	0.200

E2

Emergency Light Fitting for Fluorescent Lamps

Series ECOLUX 6608 Economy

Dimensional Drawings (All Dimensions in mm) - Subject to Alterations

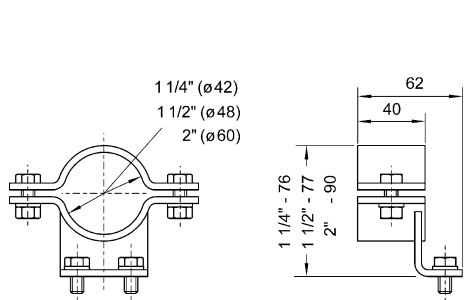


Di- men- sions	Light	
	18 W	36 W
L1	700	1310
L2 ¹⁾	400	800
L3 ²⁾	340 ... 460	680 ... 920

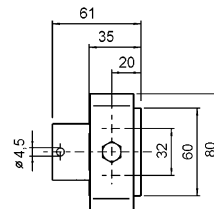
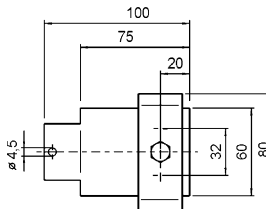
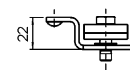
¹⁾ fixed mounting distance
²⁾ variable mounting distance

04824E00

Emergency light fitting ECOLUX 6608 Economy, 18 W, 36 W



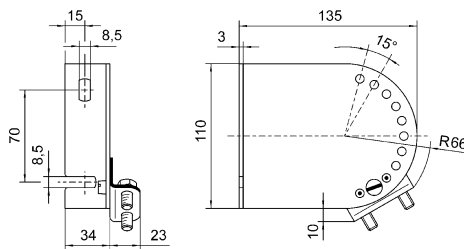
04717E00



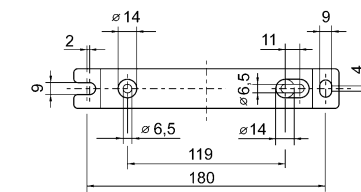
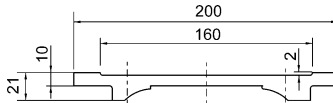
04822E00

Pipe clamp

Mounting set for grid racks



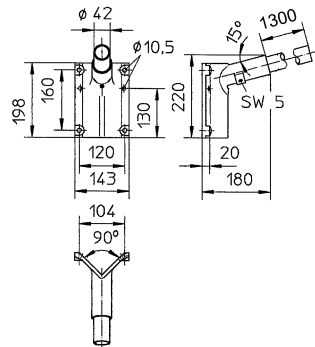
04716E00



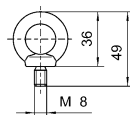
04833E00

Wall and ceiling mounting bracket

Top rail

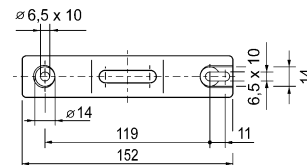
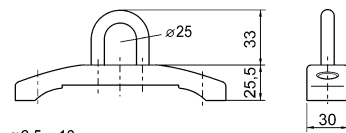


Fixation for stanchion mounting



04823E00

Ring bolt



04715E00

Mounting rail with a bracket

04834E00

Mounting accessories

We reserve the right to make alterations to the technical data, dimensions, weights, designs and products available without notice. The illustrations cannot be considered binding.